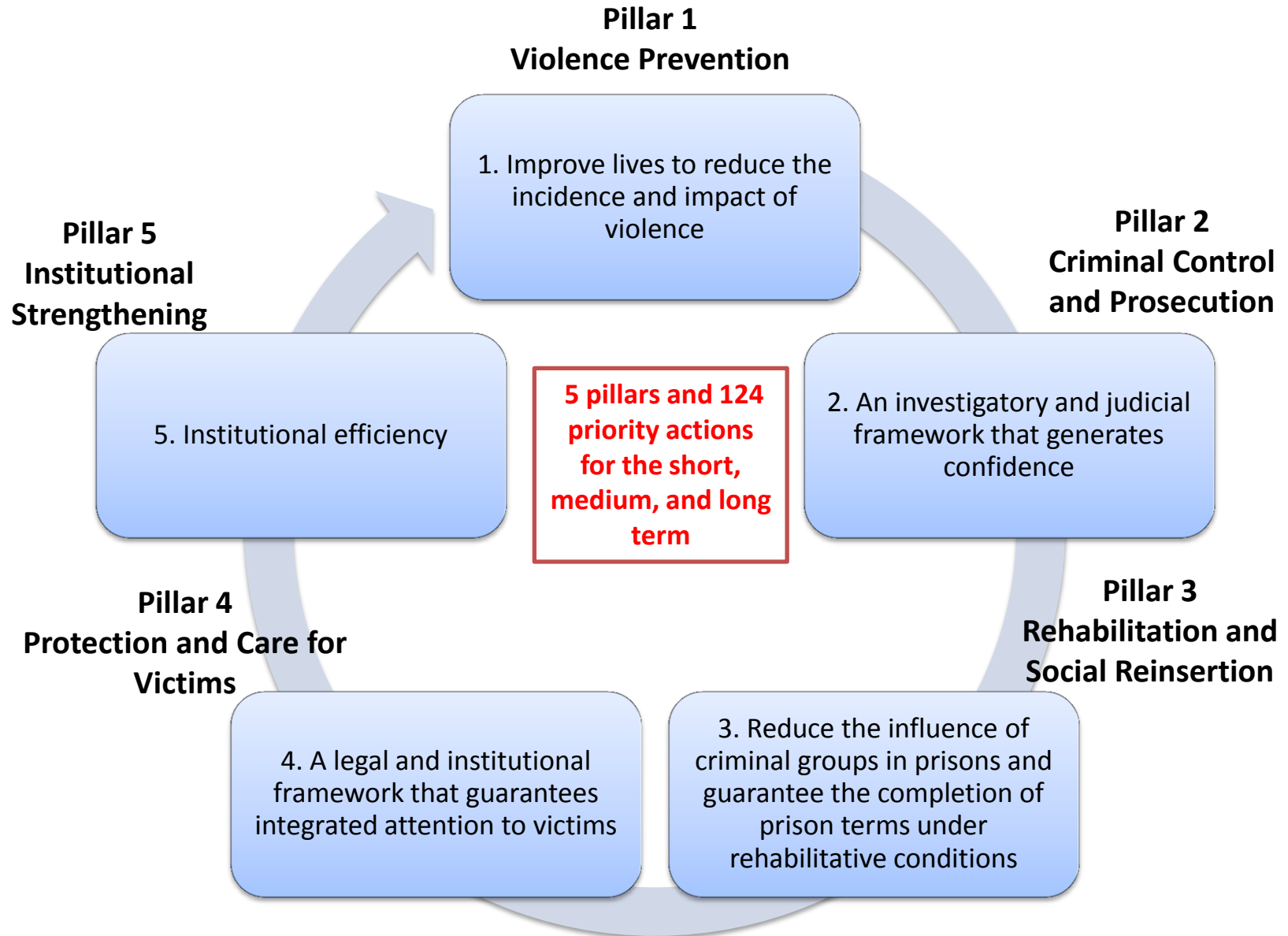




**PLAN**  
**EL SALVADOR**  
**SEGURO**

# Plan El Salvador Seguro Pillars



# Plan El Salvador Seguro

## Planning Process in 10 Priority Municipalities

Diagnostic Assessments

GOES  
Workshops  
*Planning  
Reviews*

Multi-sector  
territorial workshops  
with businesses,  
churches, NGOs and  
International Donors  
*Coordination with  
other sectors in the  
territories*

Presentation of  
municipal plans to  
the full CNSCC

Implementation,  
monitoring and  
evaluation

Junio

Julio

Agosto

Agosto

Septiembre

Octubre

Octubre- noviembre

Workshops with  
mayors, municipal  
advisors, and PNC

*Prioritization of  
sectors and  
activities*

Meeting with  
monitoring  
commission  
of the CNSCC

*Progress  
report*

Workshop with  
institutional  
representatives  
to define strategic  
priorities

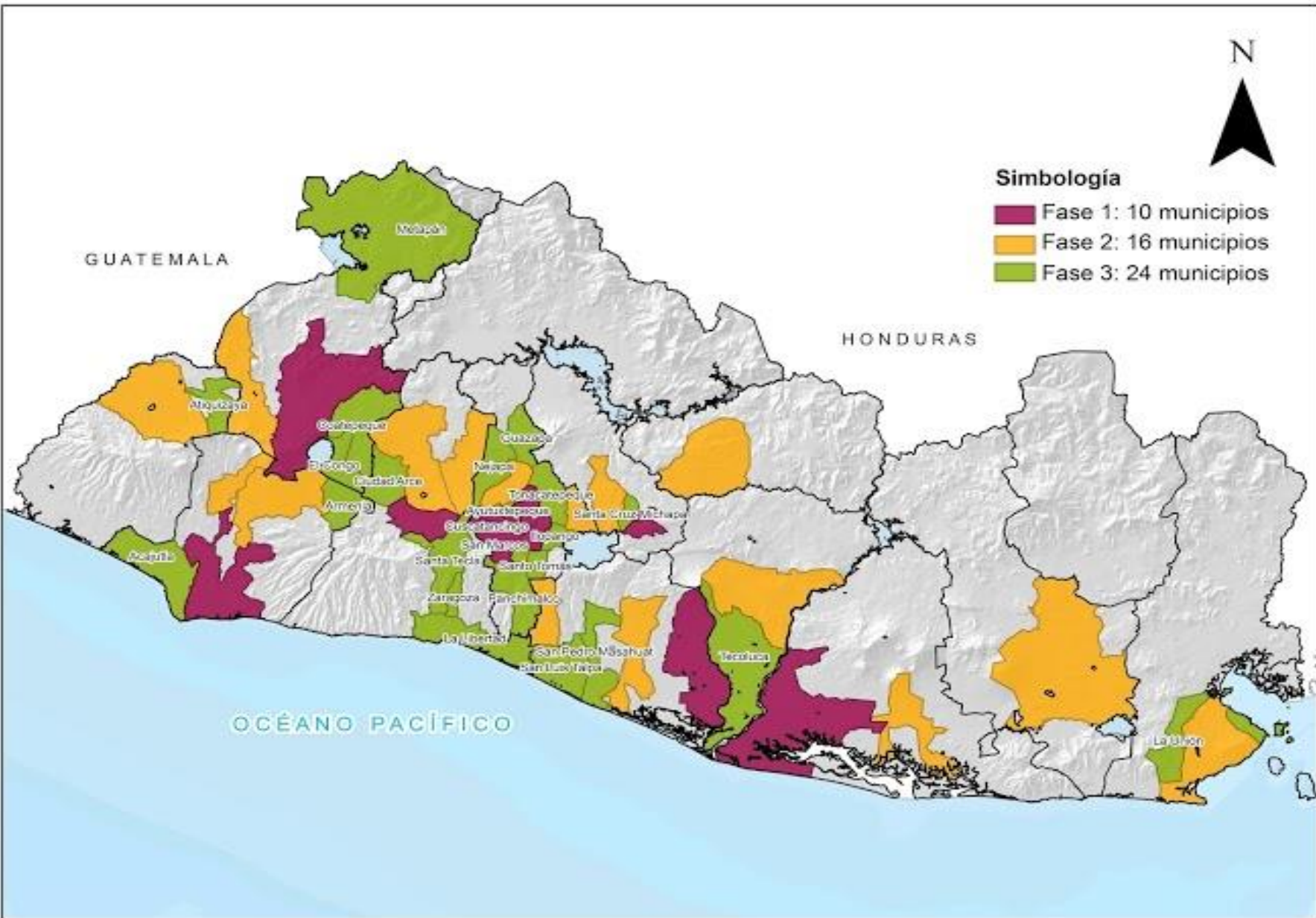
Budget  
creation and  
definition of  
financial gap

CNSCC  
Commission  
Monitoring  
Meeting

*Progress  
Reports*

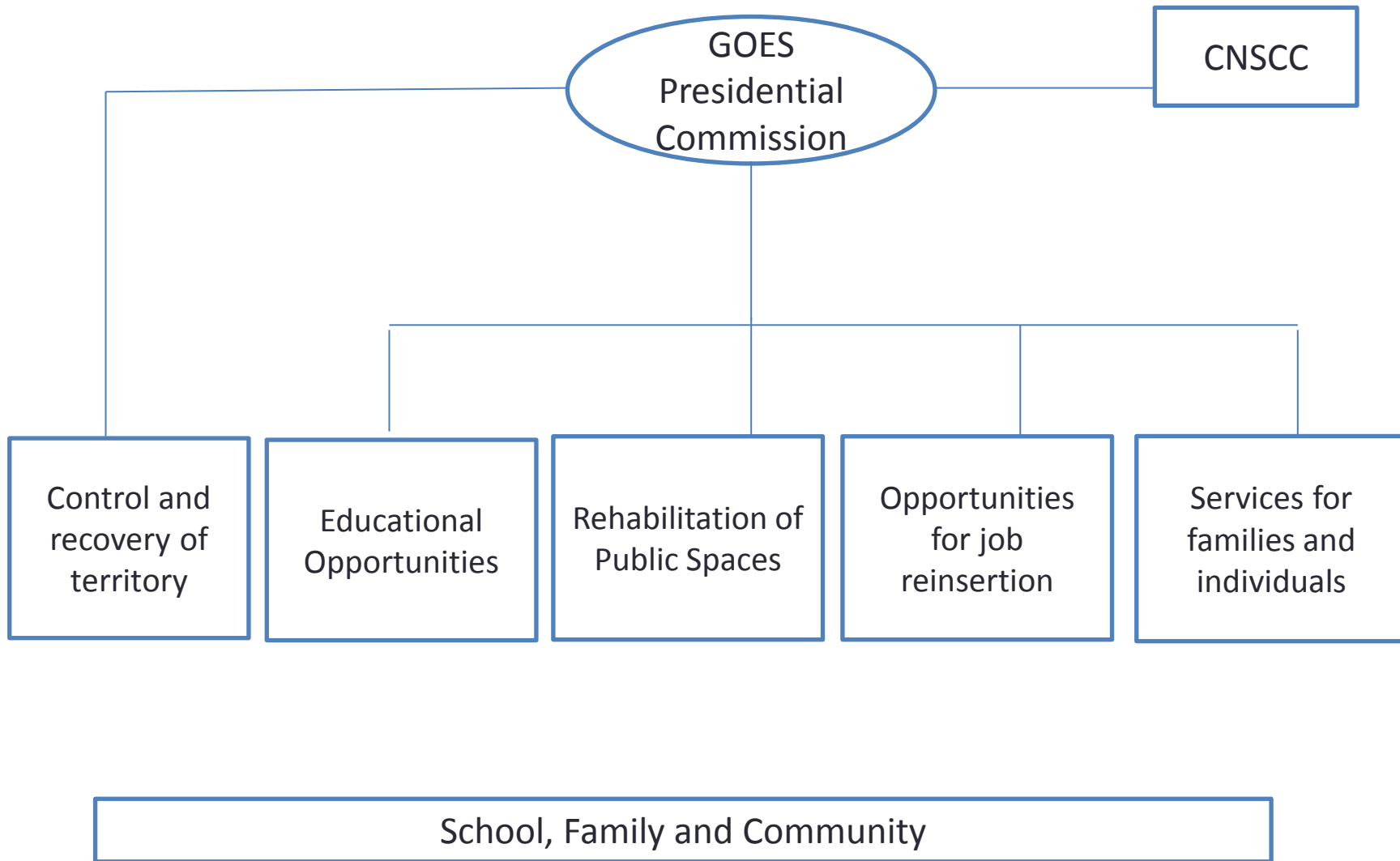
Launch of  
Territorial  
Plans

# Phased Implementation – three stages



# Strategy for Territorial Approach (Components of Municipal Plans)

Implementation Pillars in Priority Municipalities



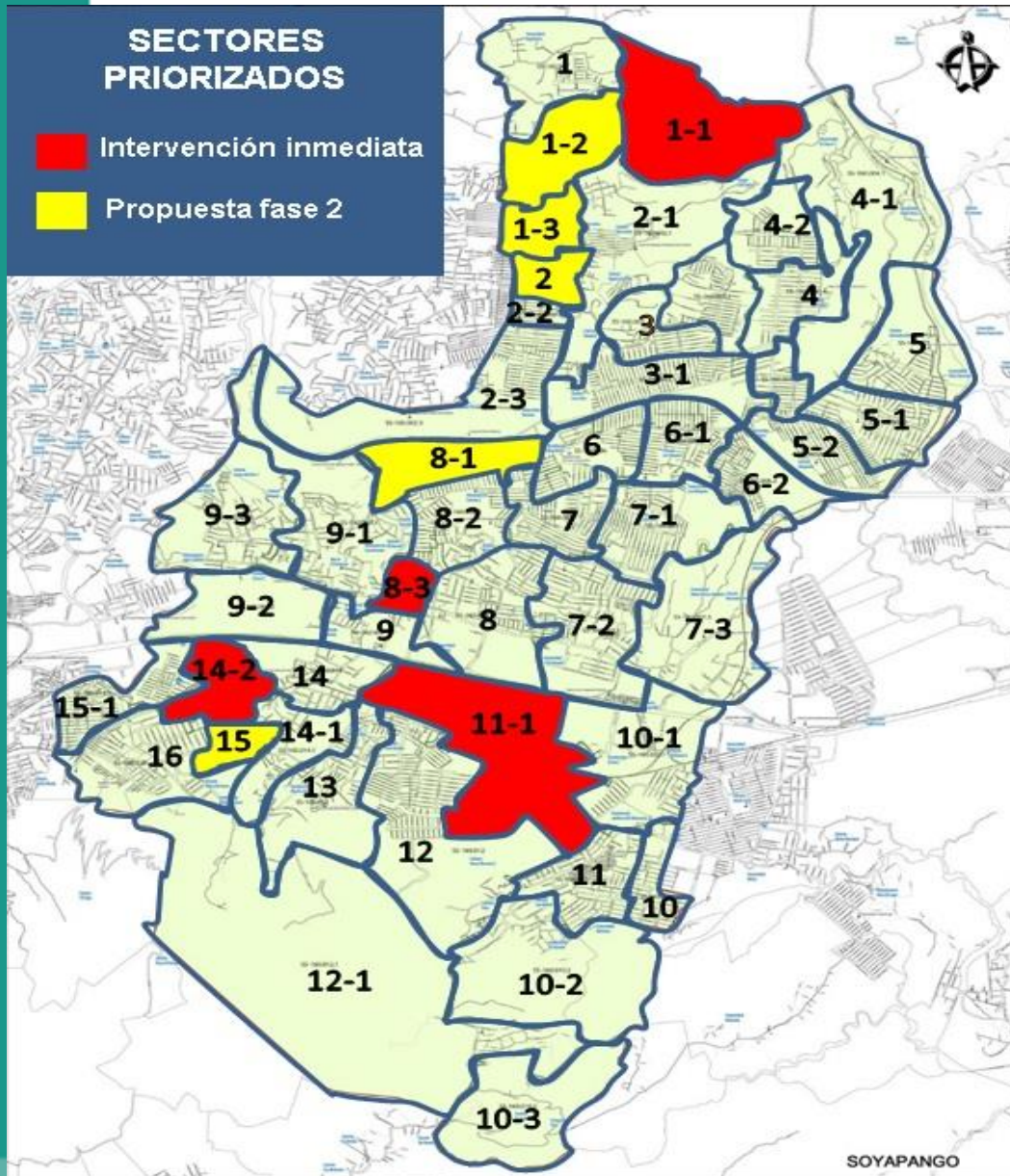
Sector PPD	Homicides/Femicide	Missing	Sexual Offense	Assault	Extortion	Theft	Vehicle Theft	Aggravated Vehicle Theft	Aggravated Theft	Threats	Culpable Homicide	Negligent Homicide	Violence against Women	Inter-familial Violence (PNC)	Sexual Offense	Offenses Committed with a firearm	Drug Arrest	Adult Detainees	Detained Gang Members	School Dropouts	Removed Students	Excluded Youth	Slums/Exclusion
160-001	1	2	1	2	2	1	2	0	1	3	0	1	5	11	1	3	0	2	1	0	0	446	1
160-001-1	2	2	1	7	0	2	0	2	5	6	0	2	4	16	1	15	0	55	36	0	0	327	1
160-001-2	2	0	0	0	1	0	0	1	0	0	0	3	15	7	0	1	2	18	11	1	65	89	1
160-001-3	2	0	0	0	0	2	1	0	1	5	0	2	0	4	0	2	0	48	26	0	0	133	2
160-002	2	0	1	2	0	0	1	0	5	2	0	1	0	5	1	7	2	42	21	0	0	0	0
160-002-1	4	1	0	2	0	4	1	3	2	2	0	3	4	4	0	7	0	14	8	0	0	664	2
160-002-2	1	0	0	1	1	1	7	0	3	3	0	1	21	5	0	5	4	25	12	0	0	255	1
160-002-3	8	1	1	0	0	2	2	0	7	1	0	13	3	4	1	15	0	19	11	1	63	0	0
160-003	0	2	1	0	0	3	0	0	2	3	0	1	5	5	1	0	0	7	6	0	0	321	2
160-003-1	5	0	1	4	0	0	3	0	2	3	2	2	4	7	1	9	0	28	14	0	0	0	0

# Accomplishments

- 81 geographic sectors prioritized in the 10 phase-one municipalities.
- 10 municipal plans developed.
- GOES commitment of support for the implementation of municipal plans.



# MUNICIPALITY OF SOYAPANGO



First Phase – Immediate Action (in red)

- 1-1: Zona Campanera
- 14-2: Zona Col. 22 de Abril
- 8-3: Zona Villa de Jesús
- 11-1: Zona Plaza Mundo

Second Phase (in yellow)

- 1-2: Las Vegas, San Antonio,
- 1-3: Las Margaritas 1, 2 and 3
- 2: Las Margaritas 4 and 5
- 8-1: Prados de Valencia 4
- 5: Monte María



# Government of El Salvador Workshops

## Components and Institutions

Workshop Date	Components	GOES Institutions
07/Aug/2015	Territorial control	PNC (coordination with FGR)
10/Aug/2015	Educational opportunities	MINED, INDES, CONNA, ISDEMU, INJUVE, ISNA, FOSALUD, Alcaldía
11 and 17 Aug/2015	Opportunities for job insertion	CONAMYPE, FISDL, MTPS, MINEC, MAG MITUR, INSAFOCOOP BFA, BH, BANDESAL, INSAFORP
13/Aug/2015	Rehabilitation and renewal of public spaces	MOP, VMT, FOVIAL, PFGL, FISDL, SPCTA, MIGOBBDT, INDES, SECULTURA Y PREPAZ
14 and 18 /Aug/2015	Services to families and individuals	CONNA, ISNA, ISDEMU, INJUVE, MINSAL, FOSALUD, MJSP/DAV

# Accomplishments

- Define strategies for every component.
- Definition of the Government of El Salvador's priority actions for each component:
  - Educational opportunities
  - Opportunities for job insertion
  - Rehabilitation and renewal of safe public spaces
  - Services for families and individuals
- Financial commitments of the Government of El Salvador
- Identification of financial gaps (ongoing)



**THANK YOU**